

HIGH SPEED DOOR SYSTEMS



PRODUCT LINE

RAPIDFLEX® FABRIC DOORS
RAPIDFLEX® RUBBER DOORS
RAPIDFREEZE® FABRIC DOORS
RAPIDSHIELD® METAL DOORS
RAPIDVIEW® FULL-VIEW METAL DOORS

MODELS

990/991/992/993/994
995
997
998
999



INDUSTRY LEADING
COMMERCIAL & INDUSTRIAL SOLUTIONS



High Performance Doors That Are as Fast, Reliable and Versatile as your Business

The RapidFlex®, RapidFreeze®, RapidShield® and RapidView® series of high performance doors are engineered to allow maximum productivity with fast-acting curtains, high-cycle performance and resistance to damage from accidental collisions. With robust safety features and a pressure resistant design, these high speed doors will keep your facility running securely, efficiently and environmentally controlled.

General Features and Benefits

Springless, High Cycle Design

- Minimizes down-time, ideal for high cycle applications

Fast-acting

- Fully opens in 4 seconds or less*

Breakaway Bottom

- Designed to break away from the side guides
- Simple reset and self repair after a break-away event
- Impact detection

Airtight Guides (Model 991)

- Tight sealing guides resist air pressure
- Help control environments; minimize debris

Direct Gear Drive System

- Eliminates the wear and tear associated with conventional chain and sprocket systems
- Advanced gearbox design features door stop safety device

Robust Safety Features

- Dual infrared sensors
- Wireless bottom reversing edge
- Flexible bottom edge (Model 990)
- Built-in door stop device
- Safety light curtain minimizes contact with objects in the doorway (Models 998,999)

Independently Tested

- Air infiltration (Model 991)
- Wind load

Hood Standard (Models 990, 991, 992, 993, 994, 995)

Padlockable Disconnect at Controller

Plug and Play Wiring

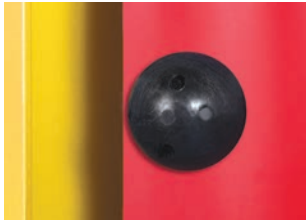
*Depending on opening height and door models

Cover image: Model 999, Silver

Image above: Model 995, Black

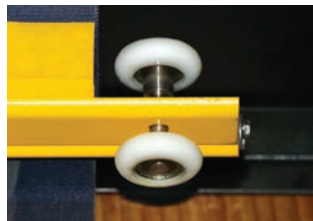


Standard Product Features



Patent-pending Curtain Lock

Enables doors to be repaired quickly and in the field, unlike zippered doors. (Models 990 and 991 only).



Patent-pending Roller Wind Strut

Heavy-duty strut with roller wind lock enhances curtain strength. (Models 993 and 994 only).



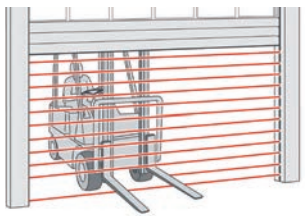
Wireless Reversing Edge

Designed to reverse with minimum contact load.



Obstruction Detection

Features two in-plane infrared sensors, minimizing contact with objects in the doorway. (Optional on Models 998, 999).



Light Curtain Obstruction Detection

Detects objects that break the beams of a 6' tall light curtain. (Models 998 and 999).



Direct Drive Motor

Advanced gearbox features door stop safety device is design to reduce maintenance costs and increase durability.



Patent-pending Helical Design Head Plate

Prevents metal curtain contact and provides smooth operation. (Models 998 and 999 only).



Flexible Bottom Bar with Detachable Bottom Seal

Allows for easy replacement and troubleshooting. (Model 990 only).



3-phase NEMA 4X Control Panel

On-board self diagnostic capabilities. Built-in service reminder. Fifteen programmable inputs and five programmable outputs. Padlockable fused disconnect.



1-phase NEMA 4X Control Panel*

On-board self diagnostic capabilities. Works with 110-120V AC 1PH, 190-207V AC 1PH†, 208-245V AC 1PH. Eight programmable inputs and two programmable outputs.

†Requires stand-alone mounted transformer.

Options

Signaling Device Options

Red/green LED traffic light, horn/strobe combination, rotating warning light.

Actuation Options

Push button, key switch, pull switch, loop detector, motion detector, treadle switch, radio control. Wireless options: pull switch, 1 or 3-button push button, palm button.

Programmable LED Lighting System

3" tall light bar with red, yellow, green lights.

*Available for up to 10'x10' for Models 990 and 991.

HIGH SPEED FABRIC DOORS

Flexible Bottom
Fabric Door
RAPIDFLEX® 990



Fabric Door
RAPIDFLEX® 991



Strutted
Fabric Door
RAPIDFLEX® 992

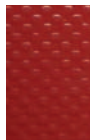


Features

Application	Manufacturing; Distribution; Food/Beverage; Pharmaceutical	Manufacturing; Distribution; Food/ Beverage; Cold Storage; Pharmaceutical	Manufacturing; Distribution; Food/Beverage; Cold Storage
Location of Opening (Mount)	Interior	Interior	Interior/Exterior (Mount Inside/Outside)
Maximum Width	12'	14'	16'
Maximum Height	12'	14'	15'
Opening Speed	Up to 70"/sec	Up to 70"/sec	Up to 65"/sec
Closing Speed	Up to 40"/sec	Up to 40"/sec	Up to 40"/sec
Certified Air Tightness ¹	N/A	< 0.236 cfm/sq ft	N/A
Curtain Lock	Yes	Yes	N/A
Break Away Self Reset	Yes	Yes	Yes
Wind Load ²	Up to 3.0 psf	Up to 7.5 psf	Up to 4.0 psf
Wind Strut	N/A	N/A	1" strut standard
Curtain Material	2 layers of light PVC-coated polyester with 1 layer of polyester weave	2 layers of PVC-coated polyester with 1 layer of polyester weave	Interior: 2 layers of PVC-coated polyester with 1 layer of polyester weave; Exterior/Interior: 3 layers of PVC-coated polyester with 2 layers of polyester weave
Vision	Optional 20" high vision panels spaced evenly across width of door	Optional 20" high vision panels spaced evenly across width of door	Optional 20" high vision panels spaced evenly across width of door
Operation	Direct drive motor and gearbox system with field changeable universal handing and door stop safety device	Direct drive motor and gearbox system with field changeable universal handing and door stop safety device	Direct drive motor and gearbox system with field changeable universal handing and door stop safety device
Control Panel	Variable frequency drive NEMA 4X cULus listed; Onboard self diagnostic and service reminder Built-in padlockable fused disconnect	Variable frequency drive NEMA 4X cULus listed; Onboard self diagnostic and service reminder Built-in padlockable fused disconnect	Variable frequency drive NEMA 4X cULus listed; Onboard self diagnostic and service reminder Built-in padlockable fused disconnect
Obstruction Safety Detection	Infrared sensors mounted in-plane to the door curtain at 18" and 50" - 54" from floor	Infrared sensors mounted in-plane to the door curtain at 18" and 50" - 54" from floor	Infrared sensors mounted in-plane to the door curtain at 18" and 50" - 54" from floor
Reversing Safety Edge	Wireless reversing edge; Flexible bottom bar with detachable bottom seal	Wireless reversing edge	Wireless reversing edge
Available Supply Voltages ³	110-120V AC 1 PH, 190-207V AC 1PH [†] , 208-245V AC 1PH, 190-207V AC 3PH [†] , 208-245V AC 3PH, 456-495V AC 3PH, 575V 3PH [†] (†requires stand-alone mounted transformer)	110-120V AC 1 PH, 190-207V AC 1PH [†] , 208-245V AC 1PH, 190-207V AC 3PH [†] , 208-245V AC 3PH, 456-495V AC 3PH, 575V 3PH [†] (†requires stand-alone mounted transformer)	110-120V AC 1 PH, 190-207V AC 1PH [†] , 208-245V AC 1PH, 190-207V AC 3PH [†] , 208-245V AC 3PH, 456-495V AC 3PH, 575V 3PH [†] (†requires stand-alone mounted transformer)
Hinged Guides	Provides easy access for maintenance	Provides easy access for maintenance	Provides easy access for maintenance
Warranty	5-year limited on drive motor and gearbox; 1-year limited on all other components	5-year limited	5-year limited

Curtain Color Options

Actual colors may vary due to fluctuation in the printing process. Always request a color sample from your Overhead Door™ Distributor for accurate color matching.



Red



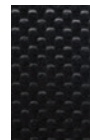
Blue



White



Gray



Black
(991 and 992 only)



Orange
(991 and 992 only)



Yellow
(991 and 992 only)



FDA Royal Blue
(991 and 992 only)

Comments

² Wind load is the ultimate pressure tested at door width of 12'.

¹ Air tightness is independently tested to ASTM E283 test standard. Wind load is the ultimate pressure tested at door width of 10'.

² Wind load is the ultimate pressure tested at door width of 16'.



Strutted Heavy-Duty Fabric Door

RAPIDFLEX® 993



Manufacturing; Distribution; Auto/Transit; Parking; Food/Beverage

Exterior (Mount Inside/Outside)

20'

20'

Up to 65"/sec

Up to 40"/sec

N/A

N/A

Yes

Up to 19.5 psf

Metal struts with roller wind lock

3 layers of PVC-coated polyester with 2 layers of polyester weave

Optional 20" vision panels spaced evenly across width of door

Direct drive motor and gearbox system with field changeable universal handing and door stop safety device

Variable frequency drive NEMA 4X cULus listed; Onboard self diagnostic and service reminder; Built-in padlockable fused disconnect

Infrared sensors mounted in-plane to the door curtain at 18" and 50"- 54" from floor

Wireless reversing edge

110-120V AC 1 PH, 190-207V AC 1PH[†], 208-245V AC 1PH, 190-207V AC 3PH[†], 208-245V AC 3PH, 456-495V AC 3PH, 575V 3PH[†] ([†]requires stand-alone mounted transformer)

Provides easy access for maintenance

5-Year Limited



Red Blue Orange Gray
Above colors also available for Model 992 with optional exterior/interior curtain material.

RAPIDFLEX®/RAPIDFREEZE® FABRIC DOORS

MODELS 990/991/992/993

Ideal for separating controlled environment spaces such as food and beverage facilities, high traffic zones, storage rooms, freezer and cooler applications and manufacturing areas to prevent cross-contamination.

- Dual wind lock allows for quiet and smooth operation on Models 990 and 991
- Flexible bottom bar with detachable seal for easy replacement and troubleshooting on Model 990
- Heavy-duty strut with roller wind lock on Model 993



² Wind load is the ultimate pressure tested at door width of 20'.

Model 991, Gray, windows

HIGH SPEED FABRIC, RUBBER & METAL DOORS

Strutted Maximum Strength Fabric Door

RAPIDFLEX® 994



Extreme Rubber Door

RAPIDFLEX® 995



Freezer and Cooler Fabric Door

RAPIDFREEZE® 997



Features

Application	Manufacturing; Distribution; Mining; Auto/Transit; Parking	Manufacturing; Distribution; Mining; Auto/Transit; Parking	Cold storage; Food/Beverage; Distribution
Location of Opening (Mount)	Exterior (Mount Inside/Outside)	Exterior (Mount Inside/Outside)	Interior
Maximum Width	24'	30'	12'
Maximum Height	18' at 24' wide or 20' at 23' wide	30'	18'
Opening Speed	Up to 55"/sec	Up to 50"/sec	Up to 80"/sec
Closing Speed	Up to 40"/sec	Up to 40"/sec	Up to 40"/sec
Certified Air Tightness ¹	N/A	N/A	N/A
Curtain Lock	N/A	Yes	N/A
Break Away Self Reset	Yes	Yes	Yes
Wind Load ²	Up to 22.0 psf	Up to 27.0 psf	Up to 2.0 psf
Wind Strut	4" articulating roller wind strut	N/A	N/A
Curtain Material	3 layers of PVC-coated polyester with 2 layers of polyester weave	5 layers of NBR Rubber with 4 layers of polyester weave	2 layers of PVC-coated polyester with 1 layer of polyester weave and conductive plus radiant insulation
Vision	Optional 20" high vision panels spaced evenly across width of door	Optional 10" x 20" vision panels (maximum quantity depending on door size)	N/A
Operation	Direct drive motor and gearbox system with field changeable universal handing and door stop safety device	Direct drive motor and gearbox system with field changeable universal handing and door stop safety device	Direct drive motor and gearbox system with field changeable universal handing and door stop safety device
Control Panel	Variable frequency drive NEMA 4X cULus listed; Onboard self diagnostic and service reminder; Built-in padlockable fused disconnect	Variable frequency drive NEMA 4X cULus listed; Onboard self diagnostic and service reminder; Built-in padlockable fused disconnect	Variable frequency drive NEMA 4X cULus listed; Onboard self diagnostic and service reminder; Built-in padlockable fused disconnect; Includes power for guide heater and air curtain
Obstruction Safety Detection	Infrared sensors mounted in-plane to the door curtain at 18" and 50"-54" from floor	Infrared sensors mounted in-plane to the door curtain at 8" and 50"-54" from floor	Infrared sensors mounted in-plane to the door curtain at 16" and 50"-54" from floor;
Reversing Safety Edge	Wireless reversing edge	Wireless reversing edge	Wireless reversing edge
Available Supply Voltages ³	190-207V AC 3PH [†] , 208-245V AC 3PH, 456-495V AC 3PH, 575V 3PH [†] ([†] requires stand-alone mounted transformer)	190-207V AC 3PH [†] , 208-245V AC 3PH, 456-495V AC 3PH, 575V 3PH [†] ([†] requires stand-alone mounted transformer)	208-245V AC 3PH, 456-495V AC 3PH, 575V 3PH [†] ([†] requires stand-alone mounted transformer)
Hinged Guides	Provides easy access for maintenance	N/A	N/A
Warranty	5-Year Limited	5-Year Limited	5-Year Limited
Curtain Color Options Actual colors may vary due to fluctuation in the printing process. Always request a color sample from your Overhead Door™ Distributor for accurate color matching.	 Red Blue Orange Gray	 Black Blue	 Red Blue White Gray
Comments	² Wind load is the ultimate pressure tested at door width of 20'.	² Wind load is the ultimate pressure tested at door width of 19'.	² Wind load is the ultimate pressure tested at door width of 10'. ³ Applications with air curtain may require 460V or 575V.



Metal Door
RAPIDSHIELD® 998



Full-View Metal Door
RAPIDVIEW® 999



Parking garages, Manufacturing,
Auto Dealerships

Auto Dealerships, Retail,
Manufacturing

Interior/Exterior (Mount Inside)

Interior/Exterior (Mount Inside)

26'

20'

21'

21'

Up to 80"/sec

Up to 80"/sec

Up to 20"/sec

Up to 20"/sec

N/A

N/A

N/A

N/A

N/A

N/A

Up to 100.0 psf*

Up to 50.0 psf

N/A

N/A

Dual-walled aluminum

Aluminum and scratch-resistant polycarbonate

Optional scratch-resistant polycarbonate panels

Scratch-resistant polycarbonate panel

Direct drive motor and gearbox system with field changeable universal handing and door stop safety device

Direct drive motor and gearbox system with field changeable universal handing and door stop safety device

Variable frequency drive NEMA 4X cULus listed; Onboard self diagnostic and service reminder; Built-in padlockable fused disconnect

Variable frequency drive NEMA 4X cULus listed; Onboard self diagnostic and service reminder; Built-in padlockable fused disconnect

Integrated light curtain

Integrated light curtain

Wireless reversing edge

Wireless reversing edge

208-245V AC 3PH,
456-495V AC 3PH, 575V 3PH†
(†requires stand-alone mounted transformer)

208-245V AC 3PH,
456-495V AC 3PH, 575V 3PH†
(†requires stand-alone mounted transformer)

Provides easy access for maintenance

Provides easy access for maintenance

5-Year Limited

5-Year Limited



Silver powder coat made to mimic anodized aluminum



Approximately 200 RAL powder coat finishes available.

RAPIDFLEX® FABRIC & RUBBER DOORS MODELS 994/995/997

Well-suited for applications where forklifts and commercial vehicles can quickly enter from the outside while resisting strong wind and the elements. Ideal for manufacturing facilities or extreme environments.

- Staged head plate design for easy installation
- Heavy-duty strut with roller wind lock on Model 994
- Actively heated guides on Model 997 ensures the complete height of the guide has uniform temperature to prevent condensation
- Powder coated high visibility guides



Model 993, Blue

RAPIDSHIELD®/ RAPIDVIEW® METAL DOORS MODELS 998/999

Deliver security and durability with opening speed of up to 80" per second.

- Model 998 provides a solid aluminum curtain. Ideal for applications where security and privacy are a priority.
- Model 999 is a full-view door with polycarbonate panels for light infiltration and is perfect for high traffic applications requiring aesthetic appeal and visibility.
- Model 998 available with FBC approved HVHZ impact resistance.
- Optional perforated, vision or insulated slats available.

² Wind load is the ultimate pressure tested at door width of 15'.

² Wind load is the ultimate pressure tested at door width of 15'.

* Up to 50.0 psf with optional vision panels.



Model 998 with vision panels

Tools to help you
get the job done.



Architect's Corner

A resource for architects, containing comprehensive technical and resource materials to support your project, including drawings and specifications for commercial doors.

overheaddoor.com

The original, innovative choice for unequalled quality and service.

Overhead Door Corporation pioneered the sectional garage door industry, inventing the first sectional garage door in 1921 and the first electric door operator in 1926. Today, we continue to be the industry leader through the strength of our product innovation, superior craftsmanship and outstanding customer support, underscoring a legacy of quality, expertise and integrity. That's why design and construction professionals specify Overhead Door™ products more often than any other brand. Our family of over 400 Overhead Door™ Distributors across the U.S. and Canada not only share our name and logo, but also our commitment to excellence.



INDUSTRY LEADING
COMMERCIAL & INDUSTRIAL SOLUTIONS

2501 S. State Hwy. 121 Bus., Suite 200, Lewisville, TX 75067
1-800-929-DOOR • sales@overheaddoor.com
overheaddoor.com