

SECTIONAL STEEL DOOR SYSTEMS



PRODUCT LINE

NON-INSULATED DOORS

INSULATED DOORS

MODELS

416/420/424/430

418/422/426/432



INDUSTRY LEADING
COMMERCIAL & INDUSTRIAL SOLUTIONS



General Features and Benefits

Solidly Constructed for Reliable Performance

- 16, 20, or 24-gauge steel door panels result in a solidly constructed door for years of dependable service
- Standard steel doors available in sizes up to 32'2" (9804 mm) in width and 24'1" (7341 mm) in height
- Insulated steel doors available in up to 32'2" (9804 mm) in width and 24'1" (7341 mm) in height
- Heavy-duty track and hardware are fabricated of high-quality galvanized steel and engineered for precise, trouble-free performance
- Flexible PVC bottom weatherseal with retainer lessens conductivity of heat and cold, minimizes air and water penetration and accommodates irregular floor conditions
- Option of insulated steel doors provides enhanced thermal efficiency and R-values* of 7.35 (1.29 K m²/W)
- Baked-on, polyester paint finish eliminates field painting and provides long-lasting protection against the elements
- Superior panel strength and well-engineered track design meets wind load requirements and codes

Specialized Options for Customized Solutions

- Full-section or individual-panel glazing satisfies requirements for external light and visitor identification
- Higher-cycle springs in optional 25k, 50k, 75k or 100k-cycles promote long-life in high-usage applications
- Optional steel strutting provides reinforcement for structural integrity on wider doors
- Other options include: electric and chain hoist operation, aluminum sash sections with choice of DSB, acrylic, polycarbonate, tempered, or wire glazing, as well as movable center posts, 3" (76 mm) track, jamb seals
- Impact bottom section available for doors exposed to damage from fork lifts and other warehouse traffic
- FBC approved wind load options available

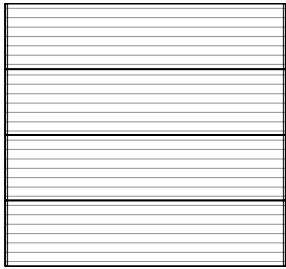
* R-Value is a measure of thermal efficiency. The higher the R-Value the greater the insulating properties of the door. Overhead Door Corporation uses a calculated door curtain R-Value for our insulated doors.

Cover image: Model 432, Ribbed Panel, custom paint finish, Aluminum Sash Section with DSB glazing

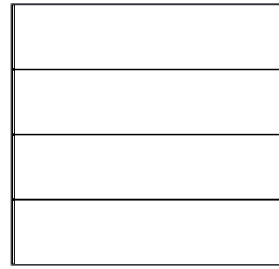
Image above: Model 424 Ribbed Panel, Industrial Brown baked-on polyester finish



Panel Options



Ribbed Panel



Flush Panel

Steel Door Panel Detail

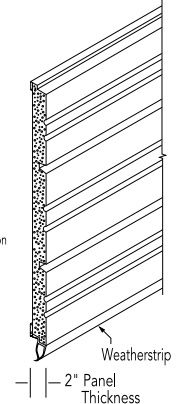
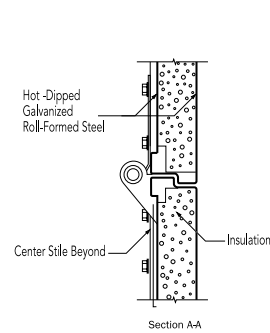
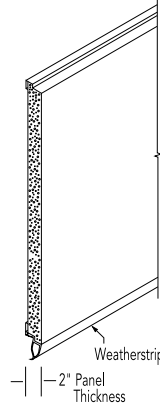
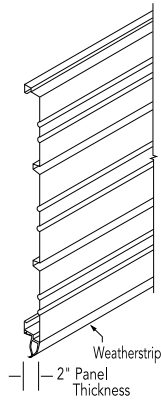
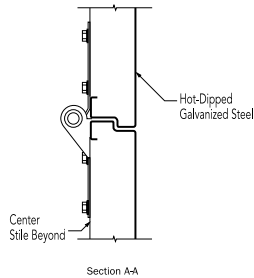
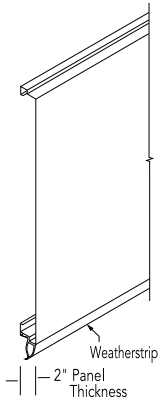
Insulated Steel Door Panel Detail

Model 416

Models 420/424/430

Model 418

Models 422/426/432



Glazing Options

All Models:

Available Only on 418, 422, 430, 432:



Aluminum Sash Section with DSB glazing



Insulated DSB (24" x 7")

Color Options

All Models:

Available Only on 424, 426, 430, 432:



White



Industrial Brown

Actual colors may vary from these shown due to fluctuations in the printing process. Ask your Overhead Door™ Distributor for color samples.



General Specifications for SECTIONAL STEEL

	Extra Heavy Duty	Heavy Duty		Medium Duty
Model	416	420	424	430
Nominal Thickness	2" (51 mm)	2" (51 mm)	2" (51 mm)	2" (51 mm)
Maximum Standard Width	32'2" (9804 mm)	31'2" (9500 mm)	30'2" (9195 mm)	20'2" (6147 mm)
Maximum Standard Height	21'1" (6426 mm)	24'1" (7341 mm)	24'1" (7341 mm)	16'1" (4902 mm)
Exterior Steel	16-gauge galvanized steel	20-gauge galvanized steel	24-gauge galvanized steel	Nominal 24-gauge galvanized steel
Exterior Surface	Flush	Ribbed	Ribbed	Ribbed
Exterior Finish Color	White baked-on polyester	White baked-on polyester	Industrial Brown and White baked-on polyester	Industrial Brown and White baked-on polyester
End Stiles	16-gauge galvanized steel	16-gauge galvanized steel	16-gauge galvanized steel	16-gauge galvanized steel
Intermediate Stiles	16-gauge galvanized steel	16-gauge galvanized steel	16-gauge galvanized steel	16-gauge galvanized steel
Lock	Interior-mounted slide lock	Interior-mounted slide lock	Interior-mounted slide lock	Interior-mounted slide lock

Available Options for SECTIONAL STEEL

Electric Operator	•	•	•	•
Bottom Sensing Edge	•	•	•	•
Chain Hoist	•	•	•	•
Pull-Rope Auto Release	•	•	•	•
Full Sash Section (Glazing Options)				
1/8" (3mm) DSB, Insulated	•	•	•	•
1/8" (3mm) & 1/4" (6mm) Acrylic	•	•	•	•
Individual Lites (Glazing Options)				
1/8" (3mm) DSB	•	•	•	•
1/8" (3mm) & 1/4" (6mm) Acrylic	•	•	•	•
1/8" (3mm) & 1/4" (6mm) Polycarbonate	•	•	•	•
1/8" (3mm) & 1/4" (6mm) Tempered	•	•	•	•
1/8" (3mm) & 1/4" (6mm) Wired	•	•	•	•
3" (76 mm) Track	•	•	•	•
Higher-Cycle Springs 25K, 50K, 75K and 100K	•	•	•	•
Exhaust Ports	•	•	•	•
Industrial Brown Paint Finish			•	•
5-Pin Tumbler Keyed Lock	•	•	•	•



General Specifications for INSULATED SECTIONAL STEEL

	Extra Heavy Duty	Heavy Duty		Medium Duty
Model	418	422	426	432
Nominal Thickness	2" (51 mm)	2" (51 mm)	2" (51 mm)	2" (51 mm)
Maximum Standard Width	30'2" (9195 mm)	29'2" (8890 mm)	28'2" (8585 mm)	20'2" (6147 mm)
Maximum Standard Height	21'1" (6426 mm)	24'1" (7341 mm)	24'1" (7341 mm)	16'1" (4902 mm)
Exterior Steel	16-gauge galvanized steel	20-gauge galvanized steel	24-gauge galvanized steel	Nominal 24-gauge galvanized steel
Back Cover	26-gauge galvanized steel	26-gauge galvanized steel	26-gauge galvanized steel	Polybonded laminate
Exterior Surface	Flush	Ribbed	Ribbed	Ribbed
Exterior Finish Color	White baked-on polyester	White baked-on polyester	Industrial Brown and White baked-on polyester	Industrial Brown and White baked-on polyester
R-Value*	7.35 (1.29 K m ² /W)	7.35 (1.29 K m ² /W)	7.35 (1.29 K m ² /W)	7.35 (1.29 K m ² /W)
End Stiles	16-gauge galvanized steel	16-gauge galvanized steel	16-gauge galvanized steel	16-gauge galvanized steel
Intermediate Stiles	16-gauge galvanized steel	16-gauge galvanized steel	16-gauge galvanized steel	16-gauge galvanized steel
Lock	Interior-mounted slide lock	Interior-mounted slide lock	Interior-mounted slide lock	Interior-mounted slide lock

Available Options for INSULATED SECTIONAL STEEL

Electric Operator	•	•	•	•
Bottom Sensing Edge	•	•	•	•
Chain Hoist	•	•	•	•
Pull-Rope Auto Release	•	•	•	•
Full Sash Section (Glazing Options)				
1/8" (3mm) DSB	•	•	•	•
1/8" (3mm) Insulated	•	•	•	•
1/8" (3mm) & 1/4" (6mm) Acrylic	•	•	•	•
Individual Lites (Glazing Options)				
1/2" (13mm) Insulated DSB	•	•	•	•
3" (76 mm) Track	•	•	•	•
Bracket Mounting	•	•	•	•
Higher-Cycle Springs 25K, 50K, 75K and 100K	•	•	•	•
Exhaust Ports	•	•	•	•
Industrial Brown Paint Finish			•	•
5-Pin Tumbler Keyed Lock	•	•	•	•

*R-Value is a measure of thermal efficiency. The higher the R-Value the greater the insulating properties of the door. Overhead Door Corporation uses a calculated door section R-Value for our insulated doors.



MODEL 416

Superior durability for applications that require high security and frequent use.



Panel Schedule		Section Schedule	
Door Width	Number of Panels	Door Height	Number of Sections
to 10'2" (3099 mm)	2	6'1" to 7'1" (1854 mm to 3937 mm)	4
10'3" to 12'2" (3124 mm to 3708 mm)	3	7'2" to 8'10" (2184 mm to 2692 mm)	5
12'3" to 16'2" (3734 mm to 4928 mm)	4	8'11" to 10'7" (2718 mm to 3226 mm)	6
16'3" to 19'2" (4953 mm to 5842 mm)	5	10'8" to 12'4" (3251 mm to 3759 mm)	7
19'3" to 22'2" (5867 mm to 6756 mm)	6	12'5" to 14'1" (3785 mm to 4293 mm)	8
22'3" to 26'2" (6782 mm to 7976 mm)	8	14'2" to 15'10" (4348 mm to 4826 mm)	9
26'3" to 32'2" (8001 mm to 9804 mm)	10	15'11" to 17'7" (4851 mm to 5359 mm)	10
		17'8" to 19'4" (5385 mm to 5893 mm)	11
		19'5" to 21'1" (5918 mm to 6426 mm)	12

Standard Features at a Glance

Nominal Thickness	2" (51 mm)
Maximum Standard Width	32'2" (9804 mm)
Maximum Standard Height	21'1" (6426 mm)
Exterior Steel	16-gauge hot-dipped galvanized steel
Exterior Surface	Flush
End Stiles	16-gauge steel
Center Stiles	16-gauge steel
Standard Mounting	Angle mount
Standard Track	2" (51 mm)
Standard Springs	10,000 cycle
Weatherstripping	Flexible PVC bottom with retainer
Operation	Manual pull rope
Finish	White baked-on polyester
Lock	Interior-mounted slide lock

Options

Electric operator or chain hoist
Bottom sensing edge
Full sash section with 1/8" (3 mm) DSB; 1/8" (3 mm) insulated; 1/8" (3 mm) and 1/4" (6 mm) acrylic
Individual lites with 1/8" (3 mm) DSB; 1/8" (3 mm) and 1/4" (6 mm) acrylic; 1/8" (3 mm) and 1/4" (6 mm) polycarbonate; 1/8" (3 mm) and 1/4" (6 mm) Tempered; 1/4" (6 mm) wired
3" (76 mm) track
Bracket mounting (not available on full vertical)
Bottom sensing edge
Higher-cycle springs in 25k, 50k, 75k, 100k cycles
Exhaust ports
Jamb weatherseals
Bottom strips, including looped PVC weatherstrips, flexible PVC astragal weatherstrips and double-contact weatherstrips
Reinforcing struts of roll-formed, galvanized steel
Movable center posts for 2" (51 mm) or 3" (76 mm) tracks that roll away, with automatic safety catches that prevent door closure when posts are removed
Tumbler keyed lock



MODELS 420/424

Heavy duty doors ideal for distribution centers, service stations and vehicle storage.



Panel Schedule		Section Schedule	
Door Width	Number of Panels	Door Height	Number of Sections
to 10'2" (3099 mm)	2	to 8'1" (2464 mm)	4
10'3" to 12'2" (3124 mm to 3708 mm)	3	8'2" to 10'1" (2489 mm to 3073 mm)	5
12'3" to 16'2" (3734 mm to 4928 mm)	4	10'2" to 12'1" (3099 mm to 3683 mm)	6
16'3" to 19'2" (4953 mm to 5842 mm)	5	12'2" to 14'1" (3708 mm to 4293 mm)	7
19'3" to 22'2" (5867 mm to 6756 mm)	6	14'2" to 16'1" (4318 mm to 4902 mm)	8
22'3" to 26'2" (6782 mm to 7976 mm)	8	16'2" to 18'1" (4928 mm to 5512 mm)	9
26'3" to 31'2"* (8001 mm to 9804 mm)	10	18'2" to 20'1" (5537 mm to 6121 mm)	10
26'3" to 30'2"** (8001 mm to 9195 mm)	10	20'2" to 22'1" (6147 mm to 6731 mm)	11
		22'2" to 24'1"*** (6756 mm to 7341 mm)	12

*Model 420 **Model 424

Standard features at a glance

Nominal Thickness	2" (51 mm)
Maximum Standard Width	31'2" (9500 mm) Model 420 30'2" (9195 mm) Model 424
Maximum Standard Height	24'1" (7341 mm)
Exterior Steel	20-gauge galvanized steel, Model 420 24-gauge galvanized steel, Model 424
Exterior Surface	Ribbed
End Stiles	16-gauge steel
Center Stiles	16-gauge steel
Standard Mounting	Angle mount
Standard Track	2" (51 mm)
Standard Springs	10,000 cycle
Weatherstripping	Flexible PVC bottom with retainer
Operation	Manual pull rope
Finish	White baked-on polyester
Lock	Interior-mounted slide lock

Options

Electric operator or chain hoist
Bottom sensing edge
Full sash section with 1/8" (3 mm) DSB; 1/8" (3 mm) insulated; 1/8" (3 mm) and 1/4" (6 mm) acrylic
Individual lites with 1/8" (3 mm) DSB; 1/8" (3 mm) and 1/4" (6 mm) acrylic; 1/8" (3 mm) and 1/4" (6 mm) polycarbonate; 1/8" (3 mm) and 1/4" (6 mm) Tempered; 1/4" (6 mm) wired
3" (76 mm) track
Bracket mounting (not available on full vertical)
Higher-cycle springs in 25k, 50k, 75k, 100k cycles
Exhaust ports
Jamb weatherseals
Bottom strips, including looped PVC weatherstrips, flexible PVC astragal weatherstrips and double-contact weatherstrips
Reinforcing struts of roll-formed, galvanized steel
Industrial Brown polyester (Model 424 only)
Movable center posts for 2" (51 mm) or 3" (76 mm) tracks that roll away, with automatic safety catches that prevent door closure when posts are removed
Tumbler keyed lock
Warehouse package



MODEL 430

Solid construction ideal for small warehouses and service stations.



Panel Schedule

Door Width	Number of Panels
8'2" to 10'2" (2438 mm to 3099 mm)	2
10'3" to 12'2" (3124 mm to 3708 mm)	3
12'3" to 16'2" (3734 mm to 4928 mm)	4
16'3" to 19'2" (4953 mm to 5842 mm)	5
19'3" to 20'2" (5867 mm to 6147 mm)	6

Section Schedule

Door Height	Number of Sections
to 8'1" (2464 mm)	4
8'2" to 10'1" (2489 mm to 3073 mm)	5
10'2" to 12'1" (3099 mm to 3683 mm)	6
12'2" to 14'1" (3708 mm to 4293 mm)	7
14'2" to 16'1" (4318 mm to 4902 mm)	8

Standard Features at a Glance

Nominal Thickness	2" (51 mm)
Maximum Standard Width	20'2" (6147 mm)
Maximum Standard Height	16'1" (4902 mm)
Exterior Steel	Nominal 24-gauge galvanized steel
Exterior Surface	Ribbed
End Stiles	16-gauge steel
Center Stiles	16-gauge steel
Standard Mounting	Angle mount
Standard Track	2" (51 mm)
Standard Springs	10,000 cycle
Weatherstripping	Standard on bottom
Operation	Manual pull rope
Finish	White baked-on polyester
Lock	Interior-mounted slide lock

Options

Electric operator or chain hoist
Bottom sensing edge
Full sash section with 1/8" (3 mm) DSB; 1/8" (3 mm) insulated; 1/8" (3 mm) and 1/4" (6 mm) acrylic
Individual lites with 1/8" (3 mm) DSB; 1/8" (3 mm) and 1/4" (6 mm) acrylic; 1/8" (3 mm) and 1/4" (6 mm) polycarbonate; 1/8" (3 mm) and 1/4" (6 mm) Tempered; 1/4" (6 mm) wired
Industrial Brown polyester
3" (76 mm) track
Bracket mounting (not available on full vertical)
Higher-cycle springs in 25k, 50k, 75k, 100k cycles
Exhaust ports
Jamb weatherseals
Bottom strips, including looped PVC weatherstrips, flexible PVC astragal weatherstrips and double-contact weatherstrips
Reinforcing struts of roll-formed, galvanized steel
Movable center posts for 2" (51 mm) or 3" (76 mm) tracks that roll away, with automatic safety catches that prevent door closure when posts are removed
Tumbler keyed lock



MODEL 418

Sturdy construction ideal for service, manufacturing and warehouse applications.



Panel Schedule		Section Schedule	
Door Width	Number of Panels	Door Height	Number of Sections
to 10'2" (3099 mm)	2	6'1" to 7'1" (1854 mm to 2159 mm)	4
10'3" to 12'2" (3124 mm to 3708 mm)	3	7'2" to 8'10" (2184 mm to 2692 mm)	5
12'3" to 16'2" (3734 mm to 4928 mm)	4	8'11" to 10'7" (2718 mm to 3226 mm)	6
16'3" to 19'2" (4953 mm to 5842 mm)	5	10'8" to 12'4" (3251 mm to 3759 mm)	7
19'3" to 22'2" (5867 mm to 6756 mm)	6	12'5" to 14'1" (3785 mm to 4293 mm)	8
		14'2" to 15'10" (4318 mm to 4826 mm)	9
		15'11" to 17'17" (4851 mm to 5359 mm)	10
		17'8" to 19'4" (5385 mm to 5893 mm)	11
		19'5" to 21'1" (5918 mm to 6426 mm)	

Standard Features at a Glance

Nominal Thickness	2" (51 mm)
Maximum Standard Width	21'1" (6426 mm)
Maximum Standard Height	16'1" (4902 mm)
Exterior Steel	16-gauge galvanized steel
Back Cover	26-gauge galvanized steel (poly-bonded laminate, high impact polystyrene (HIPS)-backed optional)
Insulation	Expanded polystyrene (standard)
R-Value*	7.35 (1.29 K m ² /W)
Exterior Surface	Flush
End Stiles	16-gauge steel
Center Stiles	16-gauge steel
Standard Mounting	Angle mount
Standard Track	2" (51 mm)
Standard Springs	10,000 cycle
Weatherstripping	Standard on bottom
Operation	Manual pull rope
Finish	White baked-on polyester
Lock	Interior-mounted slide lock

Options

Electric operator or chain hoist
Bottom sensing edge
Full sash section with 1/8" (3 mm) DSB; 1/8" (3 mm) insulated; 1/8" (3 mm) and 1/4" (6 mm) acrylic
Individual lites with 1/2" insulated DSB
3" (76 mm) track
Bracket mounting (not available on full vertical)
Higher-cycle springs in 25k, 50k, 75k, 100k cycles
Exhaust ports
Jamb weatherseals
Bottom strips, including looped PVC weatherstrips, flexible PVC astragal weatherstrips and double-contact weatherstrips
Reinforcing struts of roll-formed, galvanized steel
Movable center posts for 2" (51 mm) or 3" (76 mm) tracks that roll away, with automatic safety catches that prevent door closure when posts are removed
Tumbler keyed lock

R-Value is a measure of thermal efficiency. The higher the R-Value the greater the insulating properties of the door. Overhead Door Corporation uses a calculated door section R-Value for our insulated doors.



MODELS 422/426

Durable construction ideal for loading docks, warehouses and large openings.



Panel Schedule		Section Schedule	
Door Width	Number of Panels	Door Height	Number of Sections
to 10'2" (3099 mm)	2	to 8'6" (2464 mm)	4
10'3" to 12'2" (3124 mm to 3708 mm)	3	8'2" to 10'1" (2489 mm to 3073 mm)	5
12'3" to 16'2" (3734 mm to 4928 mm)	4	10'2" to 12'1" (3099 mm to 3683 mm)	6
16'3" to 19'2" (4953 mm to 5842 mm)	5	12'2" to 14'1" (3708 mm to 4293 mm)	7
19'3" to 22'2" (5867 mm to 6756 mm)	6	14'2" to 16'1" (4318 mm to 4902 mm)	8
22'3" to 26'2" (6782 mm to 7976 mm)	8	16'2" to 18'1" (4928 mm to 5512 mm)	9
26'3" to 29'2" [†] (8001 mm to 8890 mm)	10	18'2" to 20'1" (5537 mm to 6121 mm)	10
26'3" to 28'2" ^{††} (8001 mm to 8534 mm)	10	20'2" to 22'1" (6147 mm to 6731 mm)	11
		22'2" to 24'1" (6756 mm to 7341 mm)	12

[†] Model 422 ^{††} Model 426

Standard Features at a Glance

Nominal Thickness	2" (51 mm)
Maximum Standard Width	29'2" (8890 mm) (422 Series) 28'2" (8585 mm) (426 Series)
Maximum Standard Height	24'1" (7341 mm)
Exterior Steel	20-gauge galvanized steel (422 Series) 24-gauge galvanized steel (426 Series)
Back Cover	26-gauge galvanized steel (poly-bonded laminate, high impact polystyrene (HIPS)-backed optional)
Insulation	Expanded polystyrene (standard)
R-Value*	
Polystyrene	7.35 (1.29 K m ² /W)
Exterior Surface	Ribbed
End Stiles	16-gauge steel
Center Stiles	16-gauge steel
Standard Mounting	Angle mount
Standard Track	2" (51 mm)
Standard Springs	10,000 cycle
Weatherstripping	2" (51 mm)
Operation	Manual pull rope
Finish	White baked-on polyester
Lock	Interior-mounted slide lock

Options

Electric operator or chain hoist
Bottom sensing edge
Full sash section with 1/8" (3 mm) DSB; 1/8" (3 mm) insulated; 1/8" (3 mm) and 1/4" (6 mm) acrylic
Individual lites with 1/2" insulated DSB
Industrial Brown polyester (Model 426 only)
Bracket mounting (not available on full vertical)
Higher-cycle springs in 25k, 50k, 75k, 100k cycles
Exhaust ports
Jamb weatherseals
Bottom strips, including looped PVC weatherstrips, flexible PVC astragal weatherstrips and double-contact weatherstrips
Reinforcing struts of roll-formed, galvanized steel
Movable center posts for 2" (51 mm) or 3" (76 mm) tracks that roll away, with automatic safety catches that prevent door closure when posts are removed
Tumbler keyed lock

*R-value is a measure of thermal efficiency. The higher the R-value the greater the insulating properties of the door. Overhead Door Corporation uses a calculated door section R-value for our insulated doors.



MODEL 432

For medium-duty applications such as repair centers, vehicle storage and warehouses.



Panel Schedule		Section Schedule	
Door Width	Number of Panels	Door Height	Number of Sections
8'0" to 10'2" (2438 mm to 3099 mm)	2	to 8'1" (2464 mm)	4
10'3" to 12'2" (3124 mm to 3708 mm)	3	8'2" to 10'1" (2489 mm to 3073 mm)	5
12'3" to 16'2" (3734 mm to 4928 mm)	4	10'2" to 12'1" (3099 mm to 3683 mm)	6
16'3" to 19'2" (4953 mm to 5842 mm)	5	12'2" to 14'1" (3708 mm to 4293 mm)	7
19'3" to 20'2" (5867 mm to 6147 mm)	6	14'2" to 16'1" (4318 mm to 4902 mm)	8

Standard Features at a Glance

Nominal Thickness	2" (51 mm)
Maximum Standard Width	20'2" (6147 mm)
Maximum Standard Height	16'1" (4902 mm)
Exterior Steel	Nominal 24-gauge galvanized steel
Back Cover	Poly-bonded laminate
Insulation	Expanded polystyrene (standard)
R-Value*	7.35 (1.29 K m ² /W)
Exterior Surface	Ribbed
End Stiles	16-gauge steel
Center Stiles	16-gauge steel
Standard Mounting	Angle mount
Standard Track	2" (51 mm)
Standard Springs	10,000 cycle
Weatherstripping	Standard on bottom
Operation	Manual pull rope
Finish	White baked-on polyester
Lock	Interior-mounted slide lock

Options

Electric operator or chain hoist
Bottom sensing edge
Full sash section with 1/8" (3 mm) DSB; 1/8" (3 mm) insulated; 1/8" (3 mm) and 1/4" (6 mm) acrylic
Individual lites with 1/2" insulated DSB
Industrial Brown polyester paint
3" (76 mm) track
Bracket mounting (not available on full vertical)
Higher-cycle springs in 25k, 50k, 75k, 100k cycles
Exhaust ports
Jamb weatherseals
Bottom strips, including looped PVC weatherstrips, flexible PVC astragal weatherstrips and double-contact weatherstrips
Reinforcing struts of roll-formed, galvanized steel
Movable center posts for 2" (51 mm) or 3" (76 mm) tracks that roll away, with automatic safety catches that prevent door closure when posts are removed
Tumbler keyed lock
Back cover – 26-gauge galvanized steel or high impact polystyrene (HIPS)

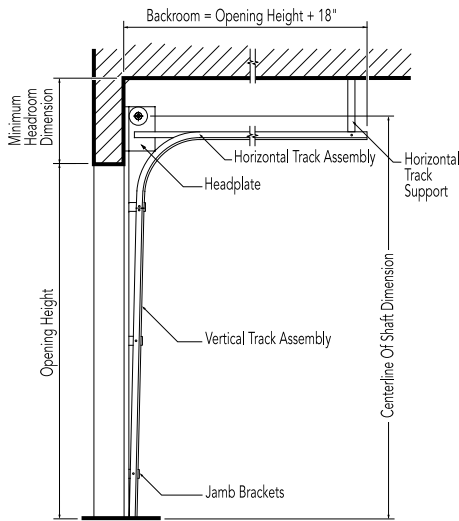
*R-Value is a measure of thermal efficiency. The higher the R-Value the greater the insulating properties of the door. Overhead Door Corporation uses a calculated door section R-Value for our insulated doors.

Track Detail

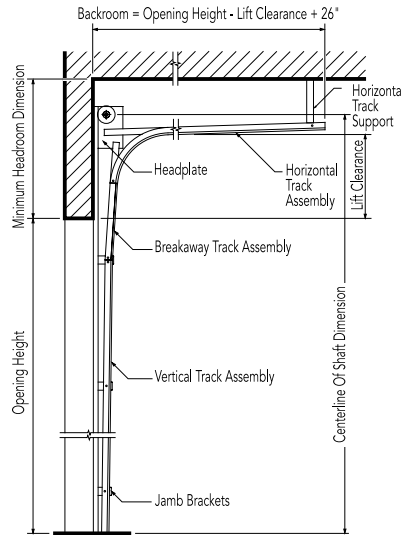
Any of the following track configurations can be selected for sectional steel door models.

O.H.=Opening Height L.C.=Lift Clearance D.H.=Door Height

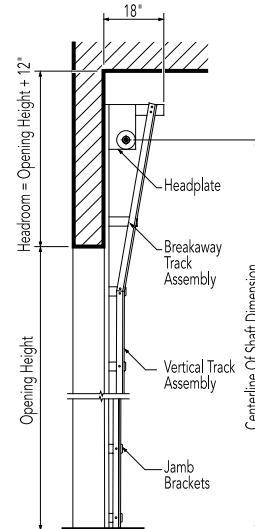
Standard Lift Track



Lift Clearance Track Standard



Full Vertical Track



2" (51 mm) Track [15" (381 mm) radius]

Door height	Centerline of shaft	Minimum headroom
Thru 12'0" (3658 mm)	O.H. + 11 5/8" (295 mm)	14 1/4" (362 mm)
Thru 16'0" (4877 mm)	O.H. + 12 5/8" (321 mm)	20 1/2" (521 mm)

2" (51 mm) Track [15" (381 mm) radius]

Door height	Centerline of shaft	Minimum headroom
Thru 12'0" (3658 mm)	O.H. + L.C. + 5 5/8" (143 mm)	L.C. + 8 3/4" (222 mm)
Thru 16'0" (4877 mm)	O.H. + L.C. + 5 5/8" (143 mm)	L.C. + 11 1/4" (286 mm)

2" (51 mm) Track

Door height	Centerline of shaft	Minimum headroom
Thru 11'0" (3353 mm)	O.H. + O.H. + 3/8" (10 mm)	O.H. + 10 1/4" (260 mm)
Thru 16'0" (4877 mm)	O.H. + O.H. + 3/8" (10 mm)	O.H. + 10 1/4" (260 mm)

3" (76 mm) Track [15" (381 mm) radius]

Door height	Centerline of shaft	Minimum headroom
Thru 18'0" (5486 mm)	O.H. + 14 5/8" (372 mm)	18" (457 mm)
Thru 32'0" (9754 mm)	O.H. + 16 7/8" (429 mm)	21 1/2" (546 mm)

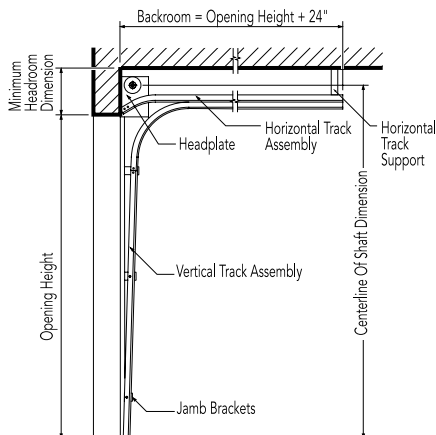
3" (76 mm) Track [15" (381 mm) radius]

Door height	Centerline of shaft	Minimum headroom
Thru 22'0" (6706 mm)	O.H. + L.C. + 6 5/8" (168 mm)	L.C. + 11 1/2" (292 mm)
Thru 32'0" (9754 mm)	O.H. + L.C. + 6 5/8" (168 mm)	L.C. + 12 1/4" (311 mm)

3" (76 mm) Track

Door height	Centerline of shaft	Minimum headroom
Thru 18'0" (5486 mm)	O.H. + O.H. + 3/8" (10 mm)	O.H. + 10 1/4" (260 mm)

Low Headroom Track Springs to Front



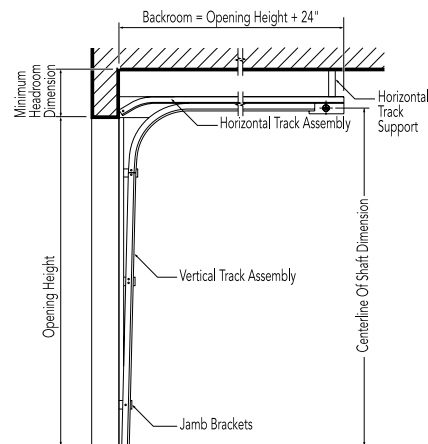
2" (51 mm) Track [15" (381 mm) radius]

Door height	Centerline of shaft	Minimum headroom
Thru 12'0" (3658 mm)	D.H. + 8" (203 mm)	11 3/4" (299 mm)
Thru 16'0" (4877 mm)	D.H. + 8" (203 mm)	12 1/2" (318 mm)

3" (76 mm) Track [15" (381 mm) radius]

Door height	Centerline of shaft	Minimum headroom
Thru 12'0" (3658 mm)	D.H. + 9" (229 mm)	13" (330 mm)
Thru 32'0" (5486 mm)	D.H. + 9" (229 mm)	13 3/4" (349 mm)

Low Headroom Track Springs to Rear



2" (51 mm) Track [15" (381 mm) radius]

Door height	Centerline of shaft	Minimum headroom
Thru 12'0" (3658 mm)	O.H. + 2" (51 mm)	7 1/2" (191 mm)
Thru 16'0" (4866 mm)	O.H. 2" (51 mm)	8" (203 mm)

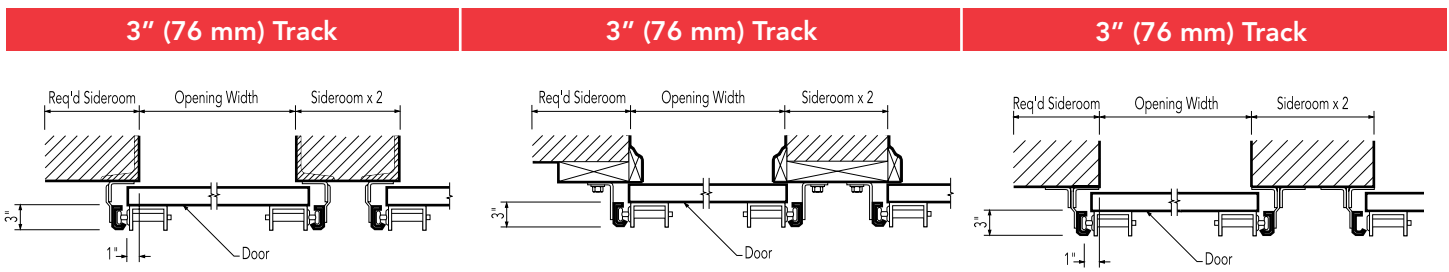
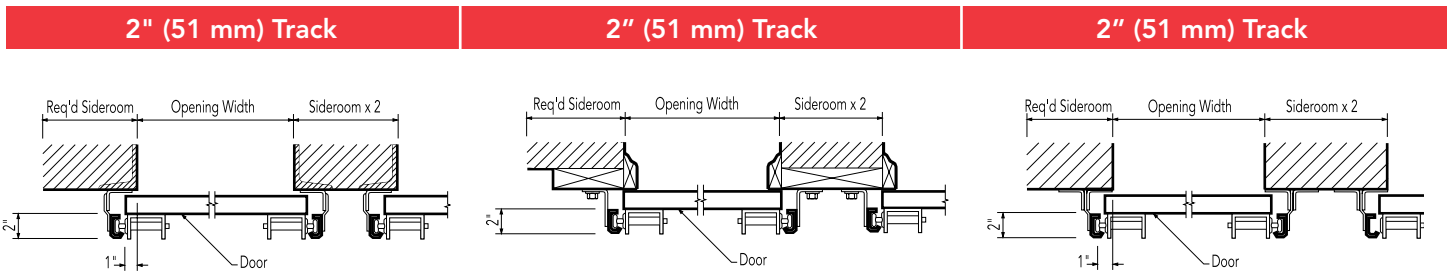
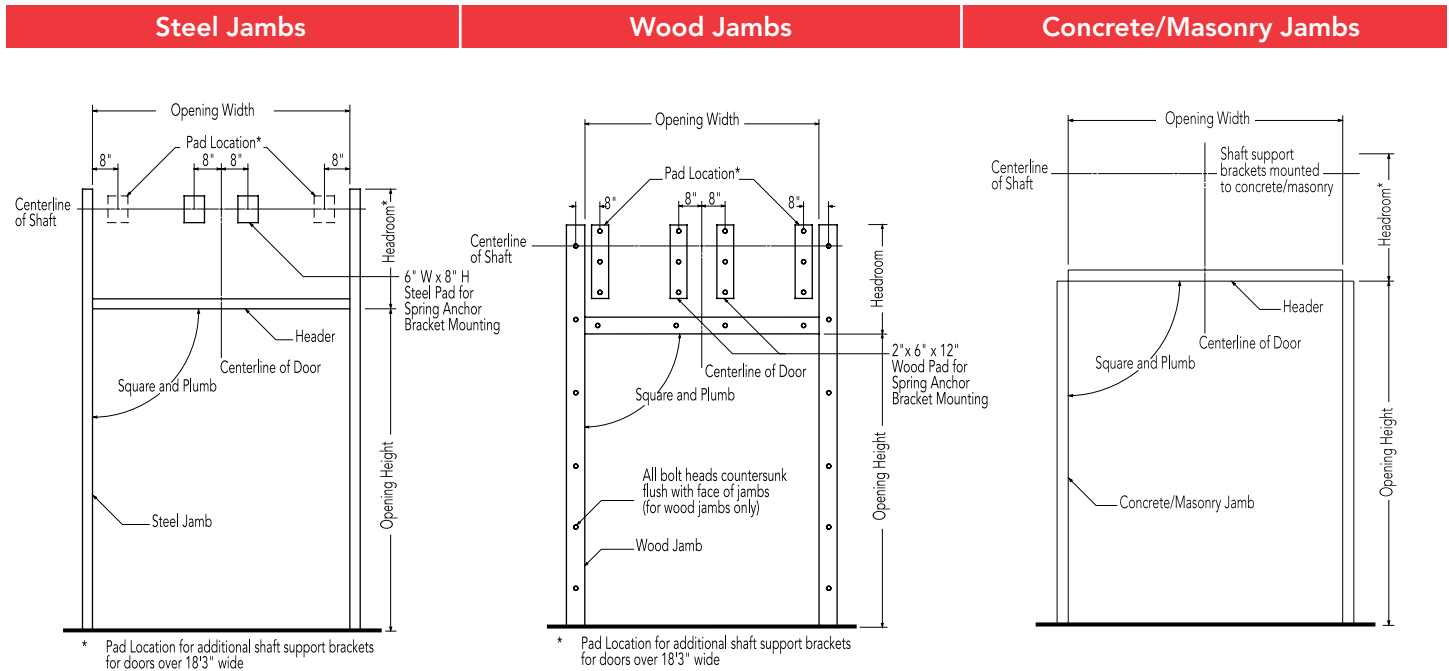
3" (76 mm) Track [15" (381 mm) radius]

Door height	Centerline of shaft	Minimum headroom
Thru 18'0" (5486 mm)	O.H. 6 3/4" (171 mm)	9 3/4" (248 mm)



Framing and Pad Detail

Framing and pad details for common installation of Sectional Steel and Insulated Steel Doors in steel, wood, concrete and masonry jambs are provided here. If you require additional information or have special project requirements, refer to the Architectural Design Manual, (www.overheaddoor.com/ADM/base.html) or consult with the Applications Engineering Group or your local Overhead Door™ Distributor.



Minimum Required Sideroom		
Track Type	2" Track (51 mm)	3" Track (76 mm)
Standard Lift	3 1/2" (89 mm)	5 1/2" (140 mm)
Low Headroom	8" (203 mm)	9" (229 mm)
Lift Clearance	3 1/2" (89 mm)	5 1/2" (140 mm)
Full Vertical	3 1/2" (89 mm)	5 1/2" (140 mm)

Minimum Required Sideroom		
Track Type	2" Track (51 mm)	3" Track (76 mm)
Standard Lift	4 1/2" (114 mm)	6 1/2" (165 mm)
Low Headroom	9" (229 mm)	10" (254 mm)
Lift Clearance	4 1/2" (114 mm)	6 1/2" (165 mm)
Full Vertical	4 1/2" (114 mm)	6 1/2" (165 mm)

Minimum Required Sideroom		
Track Type	2" Track (51 mm)	3" Track (76 mm)
Standard Lift	4 1/2" (114 mm)	6 1/2" (165 mm)
Low Headroom	9" (229 mm)	10" (254 mm)
Lift Clearance	4 1/2" (114 mm)	5 1/2" (140 mm)
Full Vertical	4 1/2" (114 mm)	5 1/2" (140 mm)

Electric Operators

We offer a broad line of electric operators to suit new construction and retrofit applications, as well as unusual or special requirements. In order to improve safety and enhance door and motor life, industry quality assurance guidelines recommend the choice of a single manufacturer for both door and operator applications. We are one of the only national manufacturers to offer a full line of commercial and industrial doors and operators specifically designed for integral applications.

Model RHX®

Model RHX® is a heavy duty commercial operator designed to operate doors up to 24' (7315 mm) in height and 3696 pounds (1676 kg). Available as either a trolley, sidemount or center-mount.

Model RSX®

Model RSX® is a standard duty commercial operator designed to operate doors up to 24' (7315 mm) in height and 1620 pounds (735 kg). It offers unique features like LimitLock®, SuperBelt™ and 16 digit menu setup.

Model RMX®

Model RMX® is our most advanced medium-duty operator. It is designed for quicker installation and hassle-free operation and operates doors up to 14' (4267 mm) in height and 620 pounds (282 kg). It is available as a trolley-type or side-mounted unit.

Model RMZ®

Model RMZ® is a standard duty commercial operator designed to operate doors up to 24' (7315 mm) in height and 1620 pounds (735 kg). It offers unique features like LimitLock®, SuperBelt™ and 16 digit menu setup.



Operator Control Options

- Push-button, key or combination stations; surface or flush-mounted for interior and/or exterior locations
- Vehicle detectors, photocell and door timer controls
- Treadle or pull switch stations
- Wireless keypad entry and coded keyboard stations
- Universal programmable door timer
- Radio control systems (24 VAC or 120 VAC)
- Explosion and dust ignition-proof systems

Safety Recommendations

We strongly recommend the use of interlock switches and monitored safety edge for all electrically operated rolling service doors. If a monitored safety edge or other reversing device is not installed, a constant-contact control switch must be used to close the door. Contact your Overhead Door™ Distributor for more information.

Electric Operator Selection Guide										
	Horsepower/ Newtons	Max. Height of Door	Max. Weight of Door	Super Belt™/ Polybelt	Worm Gear	Adjustable Clutch	Totally Enclosed	Continuous Duty	Explosion Proof	Mounting Type
RHX®	1/2 HP, 3/4 HP 1 HP, 3 HP	24'* (7315 mm)	3696 lbs (1676 kg)		•	•		•	•	T, S, C
RSX®	1/2 HP, 3/4 HP 1 HP	24' (7315 mm)	1620 (735 kg)	•		•	•	•		T, S, C
RMX®	1/2 HP	14' (4267 mm)	620 (281 kg)	•						T, S
RMZ®	?	?	?	?	?	?	?	?	?	?

Mounting Options:
T=Trolley S=Side Mount C= Center Mount

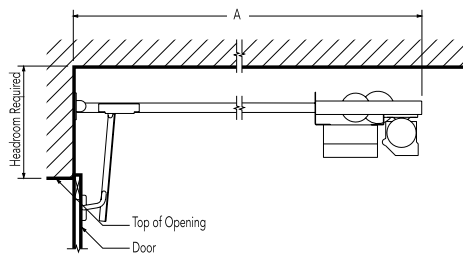
* Doors over 24' high require RHX® extended limit kit.



Mounting details

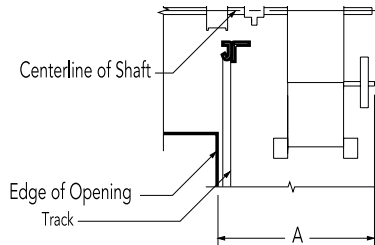
Trolley-type (Drawbar) RMZ®, RSX®, RHX®

Trolley-type (Drawbar) operators feature a power unit mounted between, above and to the rear of the horizontal tracks. The drawbar drive provides positive control of the door at all times, making this operator the preferred choice whenever possible. Maximum door width is 20' per drawbar. Door width over 20' requires dual drawbar installation. Available on Models RMZ®, RSX® and RHX®.



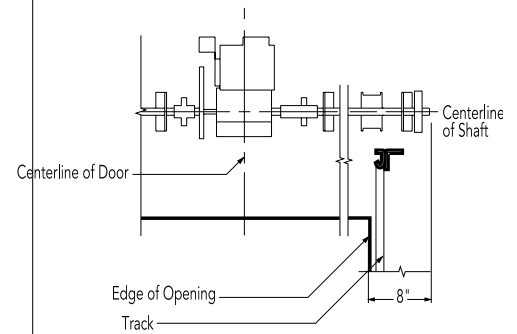
Side mount type (Jackshaft) RMZ®, RSX®, RHX®

Side-mounted (Jackshaft) RMZ®, RSX®, and RHX® operators feature a power unit mounted on the inside front wall and connected to the crosshead shaft, with an adjustable coupling or drive chain and sprockets.



Center mount type/Jackshaft RSX®, RHX®

Center-mounted (Jackshaft) operators feature a power unit on the front wall above the door opening. No additional backroom is required. Available on models RSX® and RHX®.



Minimum headroom requirements		"A" dimension - minimum (sideroom)		Minimum headroom requirements	
RMZ®	Track requirements +4 1/2" (114 mm)	2" track (51 mm)	3" track (76 mm)	RSX®	Track requirements +14" (356 mm)
RSX®	Track requirements +5" (127 mm)	RMZ®	18 1/2" (470 mm) 19 1/2" (495 mm)	RHX®	Track requirements +23 5/8" (600 mm)
RHX®	Track requirements +5" (127 mm)	RSX®	21" (533 mm) 22" (559 mm)		
		RHX®	21" (533 mm) 22" (559 mm)		
Depth requirements - "A" dimension (backroom)					
RMZ®	Door height +4' 0" (1219 mm)				
RSX®	Door height +4' 0" (1219 mm)				
RHX®	Door height +4' 10" (1473 mm)				



Model 426, Flush Panel, Aluminum Sash Section with DSB Glazing



Architect's Corner

A resource for architects, containing comprehensive technical and resource materials to support your project, including drawings and specifications for commercial doors.

overheaddoor.com

The original, innovative choice for unequalled quality and service.

Overhead Door Corporation pioneered the garage door industry, inventing the first upward-acting sectional door in 1921, and the first electric door operator in 1926. Today, we continue to be the industry leader through the strength of our product innovation, superior craftsmanship and outstanding customer support, underscoring a legacy of quality, expertise and integrity. That's why design and construction professionals specify Overhead Door™ products more often than any other brand. Our family of over 400 Overhead Door™ Distributors across the U.S. and Canada not only share our name and logo, but also our commitment to excellence.



INDUSTRY LEADING
COMMERCIAL & INDUSTRIAL SOLUTIONS



2501 S. State Hwy. 121 Bus., Suite 200, Lewisville, TX 75067
1-800-929-DOOR • sales@overheaddoor.com
overheaddoor.com