

# SIDE-FOLDING SECURITY GRILLES



PRODUCT LINE

SIDE-FOLDING FULL CLOSURE GRILLE

SIDE-FOLDING OPEN AIR GRILLE

MODELS

675/677/678/679

681/683



INDUSTRY LEADING  
COMMERCIAL & INDUSTRIAL SOLUTIONS





---

### **General features and benefits**

---

Our Side-Folding Security Grilles provide an array of attractive solutions for a spectrum of retail, commercial and industrial applications.

Our side-folding grilles boast the shortest stacking dimension of any grille available today and feature a clear anodized finish in a variety of patterns and colors. Backed by the best service company in the industry, a market-leading warranty and over 400 Overhead Door™ Distributors nationwide – our comprehensive line of security grilles affords both reliable security and peace of mind.



Model 683 ,Side-Folding, Open Air Grille

## General specifications

Specifications	Full-closure				Open-air	
	Model 675	Model 677	Model 678	Model 679	Model 681	Model 683
<b>Operation</b>	Manual	Manual	Manual	Manual	Manual	Manual
<b>Curtain insert</b>						
Glass			Standard			
Polycarbonate		Standard				
Aluminum				Standard	Standard	Standard
Perforated steel	Standard					
<b>Curtain frame and panels</b>	Aluminum	Aluminum	Aluminum	Aluminum	Aluminum	Aluminum
<b>Frame width</b>						
Standard body	7" (178 mm)	7" (178 mm)	7" (178 mm)	7" (178 mm)	7" (178 mm)	7" (178 mm)
Slim body	4" (102 mm)	4" (102 mm)	4" (102 mm)	4" (102 mm)	4" (102 mm)	4" (102 mm)
Track (mount)	Top	Top	Top	Top	Top	Top
<b>Track material</b>	Aluminum	Aluminum	Aluminum	Aluminum	Aluminum	Aluminum
<b>Maximum height</b>	14' (4267 mm)	14' (4267 mm)	12' (3658 mm)	14' (4267 mm)	14' (4267 mm)	14' (4267 mm)
<b>Standard finish</b>	Clear anodized	Clear anodized	Clear anodized	Clear anodized	Clear anodized	Clear anodized
<b>Special track curves</b>	Option	Option	Option	Option	Option	Option
<b>Special radii</b>	Option	Option	Option	Option	Option	Option
<b>Emergency Egress Door</b>	Option	Option	Option	Option	Option	Option



**MODELS 675/677/678/679**

Ideal for applications that require a secure barrier against theft and debris, such as retail applications in malls, airports and concourses. These models include four panel materials: painted perforated steel for full ventilation; clear polycarbonate for visual access and nonbreakable durability; tempered glass for a crystal-clear view; and full-height aluminum for maximum security.



*Model 677, Open Air Grille, Straight*

**Standard features at a glance**

Operation	Manual
<b>Curtain</b>	
Frame	Truss-like aluminum top and bottom plates; 1/8" (3 mm) thick
Panel width	7" (178 mm) standard body; 4" (102 mm) slim body
Finish	Aluminum clear anodized
<b>Track</b>	
Trolley assembly	1 1/8" (29 mm) Vertical adjustment 1" (25 mm) up/down without curtain removal
Track detail	Top-mounted, heavy-duty aluminum sections Height: 1 5/8" (41 mm) Width: 1 3/8" (35 mm)
Curves	90°: Standard body: 14" (356 mm) radius; Slim body 10" (254 mm) radius 120°, 135° and 150°: Standard and Slim body: 10" (254 mm) radius
Radius	14" (356 mm) Standard body; 22" (559 mm) wide body. Custom upon request

**Post types**

Lead post	Hook lock and wall channel; bi-part; top and bottom shoot bolts
Intermediate post	Bottom shoot bolt
Trailing end post	Traveling; fixed; hook lock and wall jamb; top and bottom shoot bolts; carrier

<b>Locking mechanisms</b>	
Lead post	Concealed cylinder-operated hook lock accessible from interior and exterior
Intermediate post	Concealed cylinder-operated shoot bolt accessible from one side only
Trailing end post	Attached 10' max. (3048 mm) protection plate self-locking into a steel V-Stop
Warranty	24 month OEM limited

**Options**

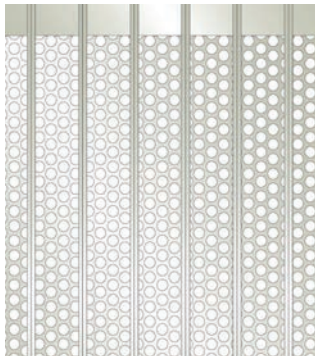
- Custom radii and curves
- Emergency egress door

Note: All post types can be used in multiple positions as need dictates and allows.



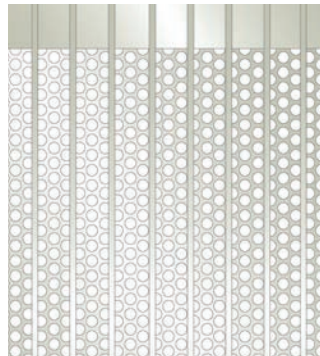
Grille patterns

Model 675 Standard body



**Curtain:** 7" (178 mm) standard width, 0.05" (1.27 mm) perforated aluminum panels with  $\frac{3}{16}$ " (5 mm) dia. holes on  $\frac{1}{4}$ " (6 mm) staggered centers that slide into aluminum hinges. Panels are framed by min. 4" (102 mm) high aluminum bottom plates and top plates.  
**Visibility:** 51% of 6  $\frac{1}{8}$ " (156 mm) viewable area.  
**Max width:** Unlimited  
**Max height:** 168" (4267 mm)

Model 675 Slim body



**Curtain:** 4" (102 mm) standard width, 0.05" (1.27 mm) perforated aluminum panels with  $\frac{3}{16}$ " (5 mm) dia. holes on  $\frac{1}{4}$ " (6 mm) staggered centers that slide into aluminum hinges. Panels are framed by min. 4" (102 mm) high aluminum bottom plates and top plates.  
**Visibility:** 51% of 3  $\frac{1}{2}$ " (89 mm) viewable area.  
**Max width:** Unlimited  
**Max height:** 168" (4267 mm)

Model 677 Standard body



**Curtain:** 7" (178 mm) standard width,  $\frac{1}{16}$ " (1 mm) thick fire-retardant polycarbonate that fit into aluminum hinges. Panels are framed by min. 4" (102 mm) high aluminum bottom plates and top plates.  
**Visibility:** 100% of 6  $\frac{1}{8}$ " (156 mm) viewable area.  
**Max width:** Unlimited  
**Max height:** 168" (4267 mm)

Model 677 Slim body



**Curtain:** 4" (102 mm) slim width,  $\frac{1}{16}$ " (1 mm) thick fire-retardant polycarbonate that fit into aluminum hinges. Panels are framed by min. 4" (102 mm) high aluminum bottom plates and top plates.  
**Visibility:** 100% of 3  $\frac{1}{2}$ " (89 mm) viewable area.  
**Max width:** Unlimited  
**Max height:** 168" (4267 mm)

Model 678 Standard body



**Curtain:** 7" (178 mm) standard width,  $\frac{1}{8}$ " (3 mm) thick tempered glass that fit into aluminum hinges. Panels are framed by min. 4" (102 mm) high aluminum bottom plates and top plates.  
**Visibility:** 100% of 5  $\frac{3}{8}$ " (137 mm) viewable area.  
**Max width:** Unlimited  
**Max height:** 144" (3658 mm)

Model 679 Standard body



**Curtain:** 7" (178 mm) standard width, 0.078" (2 mm) thick solid aluminum that fit into aluminum hinges. Panels are framed by min. 4" (102 mm) high aluminum bottom plates and top plates.  
**Visibility:** 0% of 6  $\frac{1}{8}$ " (156 mm) viewable area  
**Max width:** Unlimited  
**Max height:** 168" (4267 mm)

Model 679 Slim body



**Curtain:** 4" (102 mm) standard width, 0.07" (1.78 mm) thick solid aluminum that fit into aluminum hinges. Panels are framed by min. 4" (102 mm) high aluminum bottom plates and top plates.  
**Visibility:** 0% of 3  $\frac{1}{2}$ " (89 mm) viewable area  
**Max width:** Unlimited  
**Max height:** 168" (4267 mm)



**MODELS 681/683**

For applications when security is a priority, but you want to maximize air circulation, light infiltration and visual access to interior spaces. These grilles secure premises and guard against theft and debris with superior compactness and nearly endless design possibilities.



*Model 681, Full Closure Grille, Standard*

**Standard features at a glance**

<b>Operation</b>	Manual
<b>Curtain</b>	
<b>Frame</b>	Truss-like aluminum top and bottom plates; 1/8" (3 mm) thick
<b>Panel width</b>	7" (178 mm) standard body; 4" (102 mm) slim body
<b>Finish</b>	Aluminum clear anodized
<b>Track</b>	
<b>Trolley assembly</b>	1 1/8" (29 mm) Height: 1 5/8" (41 mm) Width: 1 3/8" (35 mm)
<b>Track detail</b>	Top-mounted, heavy-duty aluminum sections Height: 1 5/8" (41 mm) Width: 1 3/8" (35 mm)
<b>Curves</b>	90°: Standard body: 14" (356 mm) radius; Slim body 10" (254 mm) radius 120°, 135° and 150°: Standard and Slim body: 10" (254 mm) radius
<b>Radius</b>	Standard body: 10" (254 mm) radius 14" (356 mm) Standard body 22" (559 mm) wide body. Custom upon request.
<b>Post types</b>	
<b>Lead post</b>	Hook lock and wall channel; bi-part; top and bottom shoot bolts
<b>Intermediate post</b>	Bottom shoot bolt
<b>Trailing end post</b>	Traveling; fixed; hook lock and wall jamb; top and bottom shoot bolts; carrier

<b>Locking mechanisms</b>	
<b>Lead post</b>	Concealed cylinder-operated hook lock accessible from interior and exterior
<b>Intermediate post</b>	Concealed cylinder-operated shoot bolt accessible from one side only
<b>Trailing end post</b>	Attached 10' max. (3048 mm) protection plate self-locking into a steel V-Stop
<b>Security/Safety options</b>	Thumb-turn guards (perforated aluminum or polycarbonate)
<b>Warranty</b>	24 month OEM limited

**Options**

- Thumb-turn guards (perforated aluminum or polycarbonate)
- Anodized finish
- Vertical adjustment upward or downward
- Emergency egress door

Note: All post types can be used in multiple positions as need dictates and allows.



Grille patterns

Model 681 Standard body/Slim body

Standard body

Straight pattern and Brick pattern

Space between tubes 2 15/16" (73.5 mm)

Full panel width 7" (178 mm)

Top plate 4" (102 mm)

Top spacer tube size varies from curtain pattern to accommodate specific height

Spacer plate 1" (25.4 mm)

Spacer tube 1/2" (12.7 mm) x 12" (305 mm)

Bottom plate 4" (102 mm)

Max Width: Unlimited

Max Height: 168" (4267 mm)

Slim body

Straight pattern and Brick pattern

Space between tubes 1 9/16" (40 mm)

Full panel width 4" (102 mm)

Top plate 4" (102 mm)

Top spacer tube size varies from curtain pattern to accommodate specific height

Spacer plate 1" (25.4 mm)

Spacer tube 1/2" (12.7 mm) x 12" (305 mm)

Bottom plate 4" (102 mm)

Max Width: Unlimited

Max Height: 168" (4267 mm)

Straight pattern



Brick pattern



Model 683 Standard body

Standard body

Space between tubes 2 1/2" (63.5 mm)

Full panel width 6 5/16" (160 mm)

Top plate 5 1/4" (133 mm); 13 gauge

Top spacer tube size varies from curtain pattern to accommodate specific height

Aluminum rod 5/16" (3.17 mm)

Aluminum link 1/8" x 5/8" x 6 11/16"

(3.17 x 15.9 x 170 mm)

Spacer tube 1/2" x 12" (12.7 x 305 mm)

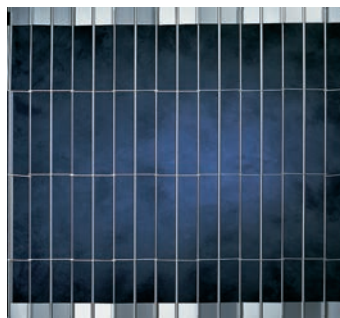
Bottom plate 5 1/4" (133 mm); 13 gauge

6" (152 mm) On Center

Max Width: Unlimited

Max Height: 168" (4267 mm)

Straight pattern



Brick pattern

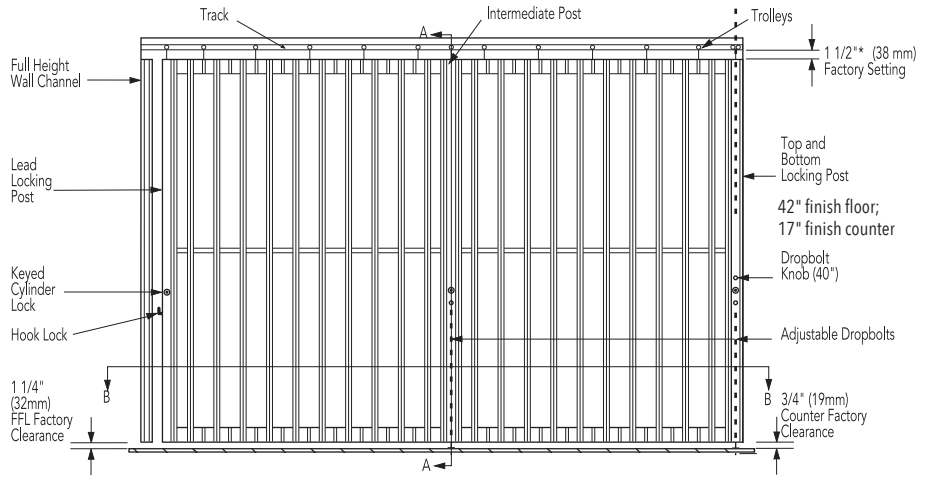


**Grille clearance elevation**

**Note:**

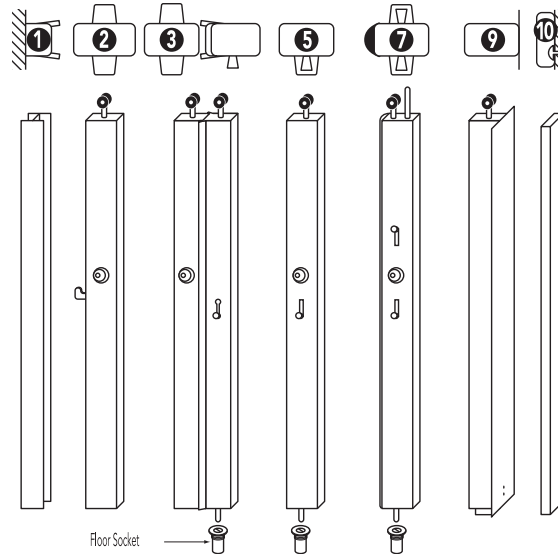
Curtain height is adjustable to a maximum of 1" (25 mm) upward, and 1" (25 mm) downward to compensate for unexpected field conditions.

\*This will vary top clearance from curtain to track from 1/2" (13 mm) to 2 1/2" (63 mm)

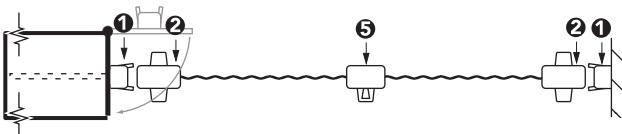


**Post descriptions**

- ❶ Wall channel
- ❷ Lead post – with cylinder/thumb-turn interior/ exterior hook bolt lock
- ❸ Bi-part – with cylinder/thumb-turn interior/ exterior and drop rod
- ❹ Intermediate post – with interior cylinder lock and drop bolt
- ❺ Top and bottom post – with cylinder/ thumb-turn interior/ exterior and rubber bumper protection plate
- ❻ Traveling end post – with protection plate, post self locks into floor "V" stop
- ❼ Fixed end post

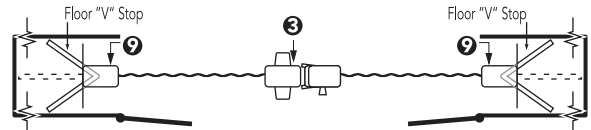


**Single stack into pocket with wall channel or pocket**



In this configuration, the traveling end post becomes a secured, keyed locking post and avoids drilling for floor socket needed by #7 post.

**Bi-part, pocket both sides**



Commonly used to break up large curtains or to provide a balanced look.

**Stack between jambs**



For use where there is no pocket availability.

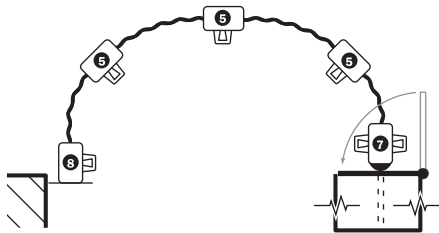
Note: Use of #7 posts for the lead or end are a viable alternative





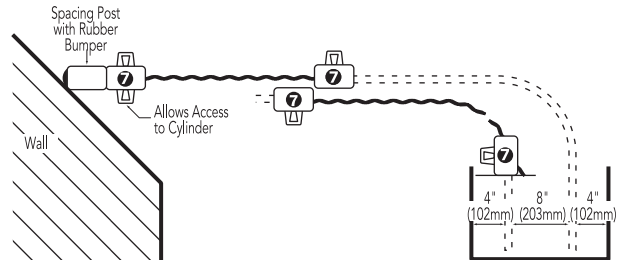
Typical layouts

Special radius curve



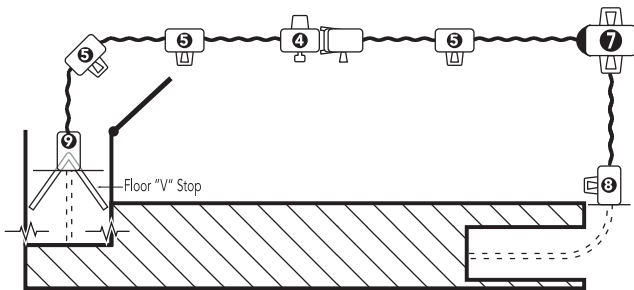
Enables the curtain to follow any lease line and adds a dramatic look to the entrance.

Dual track



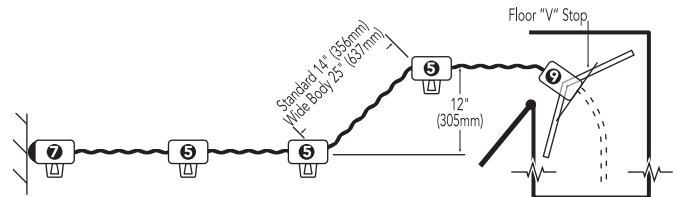
For use when minimal pocket depth is available. A top and bottom lead post with attached spacing post to an angled wall allows access to locking on the acute angle side.

90° curve with bi-part single stack into pocket



Bi-parting curtains are recommended for curtains 30' or more for ease of use.

S curve (2 135° curves) with single stack into 90° pocket

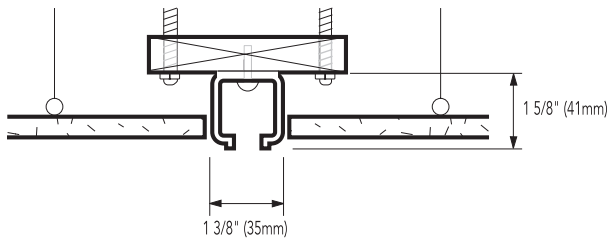


S-curves enable the curtain to avoid obstruction and provide added visual interest.

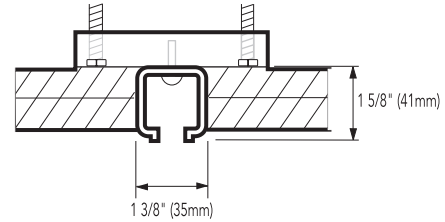
Note:  
On all layout drawings, top is exterior, bottom is interior of opening.

**Track details**

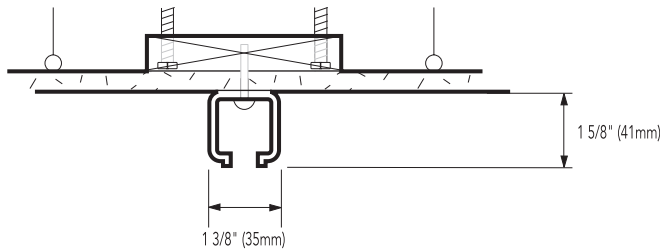
**Drop ceiling recessed track**



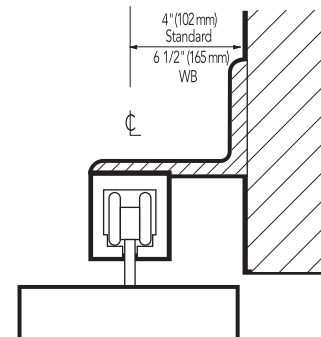
**Drywall ceiling recessed track**



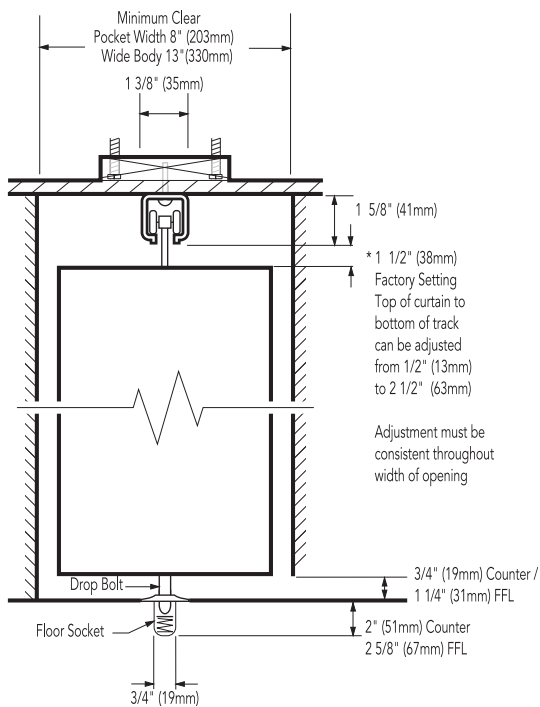
**Drop ceiling surface track**



**Face-of-wall mount**



**Optional curtain height adjustment**



**Note:**

Load requirements are 3 lbs. per square foot (1.66 Kg per square meter) and 200 lbs. per linear foot (91 Kg per linear meter) stacked. Threaded rod 1/2" (13 mm) with 2" (51 mm) x 6" (152 mm) wood stud shown. Other acceptable mounts include 2" (51 mm) x 4" (102 mm) steel or wood stud. A column is not required for support. Header and supporting structure by others.

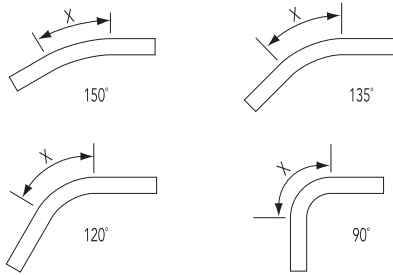
\*Curtain height is adjustable up to 1" (25 mm) up or down without removal. (Optional)





Pocket details

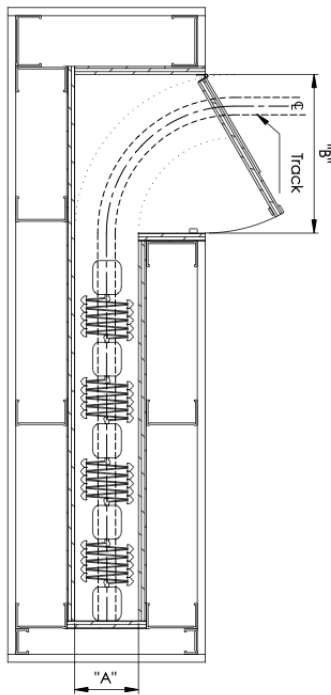
Curve details



Dimensions X		
Radius	Curve	X
10" (254 mm)	90°	16" (406 mm)
	120°	10 1/2" (267 mm)
	135°	7 15/16" (202 mm)
	150°	5 1/4" (133 mm)
14" (356 mm)	90°	22" (559 mm)
22" (559 mm)	90°	34 1/2" (876 mm)

Note: Special radius curves are available only with a template supplied. Curves cannot be smaller than 90°. Double 3/4" (19 mm) plywood eliminates problem blocking of curved layouts. Wide body models must use standard 22" radius on 90° curves. Larger special curves are also acceptable.

Minimum pocket specifications



3/4" (19 mm) per linear foot plus 3" (76 mm) for each posts.  
Min. clear pocket width 13" (330 mm).

Add 3" (76 mm) per stack per locking post. Add 8" (203 mm) to stack per Emergency Egress Grille. Add 6" (152 mm) each for bi-part.  
Note: The maximum space between locking posts is 10' (3,048 mm) for full height grilles, 6' (1,829 mm) on standard counter height and at center of every curve.

For more detailed information, visit our Architects Corner at [overheaddoor.com/architect-corner](http://overheaddoor.com/architect-corner)

Standard line 90 degree 14" radius	
Pocket width "A"	Minimum pocket door width "B"
8" (203 mm)	18" (457 mm)
9" (229 mm)	13 5/8" (346 mm)
10" (254 mm)	12" (305 mm)
11" (279 mm)	10 7/8" (276mm)
12" (305 mm)	10" (254 mm)
13" (330 mm)	9 5/16" (237 mm)
14" (356 mm)	8 13/16" (224 mm)
15" (381 mm)	8 7/16" (214 mm)
16" (406 mm)	8 3/16" (208 mm)
17" (432 mm)	8 1/16" (205 mm)
18" (457 mm)	8" (203 mm)

Slim line 90 degree 10" radius	
Pocket width "A"	Minimum pocket door width "B"
5" (127 mm)	12 1/2" (457 mm)
6" (152 mm)	8 3/4" (346 mm)
7" (178 mm)	7 3/8" (305 mm)
8" (203 mm)	6 1/2" (276mm)
9" (229 mm)	5 7/8" (254 mm)
10" (254 mm)	7 1/4" (224 mm)
11" (279 mm)	5 1/8" (214 mm)
12" (305 mm)	5" (208 mm)



Model 675, Full closure grille



## Architect's Corner

A resource for architects, containing comprehensive technical and resource materials to support your project, including drawings and specifications for commercial doors.

[www.overhaddoor.com](http://www.overhaddoor.com)

**The original, innovative choice for unequalled quality and service.**

Overhead Door Corporation pioneered the sectional garage door industry, inventing the first sectional garage door in 1921 and the first electric door operator in 1926. Today, we continue to be the industry leader through the strength of our product innovation, superior craftsmanship and outstanding customer support, underscoring a legacy of quality, expertise and integrity. That's why design and construction professionals specify Overhead Door™ products more often than any other brand. Our family of over 400 Overhead Door™ Distributors across the U.S. and Canada not only share our name and logo, but also our commitment to excellence.



INDUSTRY LEADING  
COMMERCIAL & INDUSTRIAL SOLUTIONS



2501 S. State Hwy. 121 Bus., Suite 200, Lewisville, TX 75067  
1-800-929-DOOR • [sales@overhaddoor.com](mailto:sales@overhaddoor.com)  
[overhaddoor.com](http://overhaddoor.com)